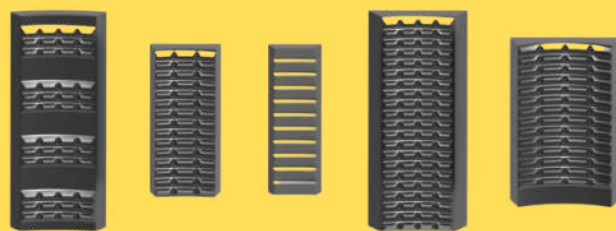


**Handling Tools**  
**Dies & Inserts**  
**Safety Products**  
**Float Valves**



**[drilling@psbvn.com](mailto:drilling@psbvn.com)**

**Whatsapp/Line/Zalo+ 84 89 6677 890**



**PRESSURE SYSTEM BUILDERS**  
**PSBV**  
V I E T N A M



Pressure System Builders Vietnam  
16 Yen The St., Ward 2, Tank Binh Dist.  
Ho Chi Minh  
Vietnam

August 5, 2024

*Sales and Service representation letter*

Keystone Energy Tools, LLC  
3711 Melancon Road  
Broussard, LA 70518

Hereinafter called Keystone, declare that:

Pressure System Builders Vietnam  
16 Yen The St., Ward 2, Tank Binh Dist.  
Ho Chi Minh  
Vietnam

Hereinafter called Pressure System Builders Vietnam, is the authorized distributor for KET products across Southeast Asia.

Territory: Vietnam, Thailand, Malaysia, Brunei, Indonesia, The Philippines, Myanmar, Timor, Laos, Cambodia, India, and Singapore

The letter of representation comes into effect on the 5<sup>th</sup> of August 2024 and is valid for the duration of the distribution agreement in between Keystone Energy Tools and Pressure System Builders Vietnam.

Keystone Energy Tools

Stamp Keystone Energy Tools, LLC

  
Amanda Delahoussaye  
President

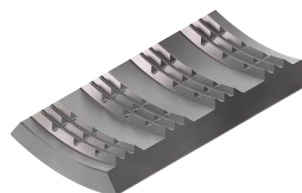
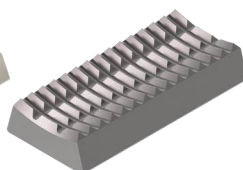
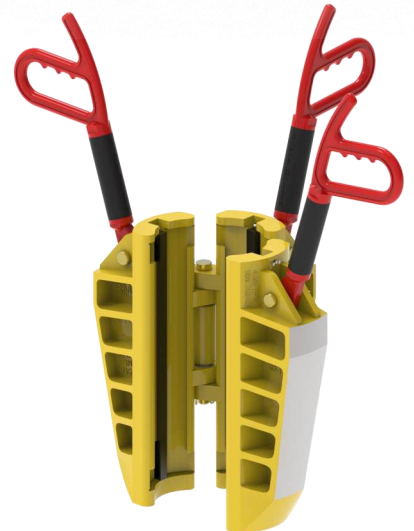
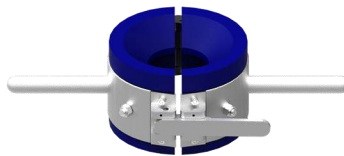
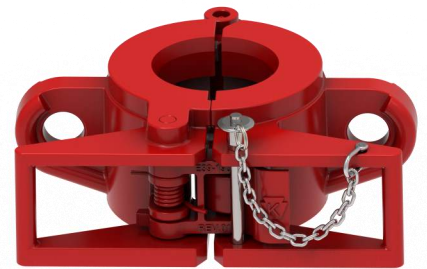
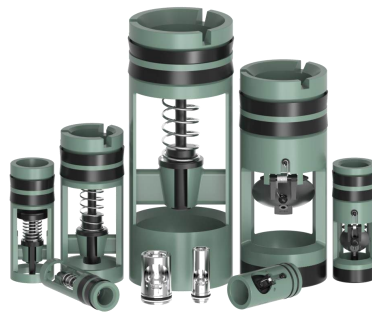


bridge the gap.

# Keystone

ENERGY TOOLS

## PRODUCT CATALOG





# Certificate of Authority to use the Official API Monogram

License Number: 8C-0195

ORIGINAL

The American Petroleum Institute hereby grants to

**KEYSTONE ENERGY TOOLS**  
3711 Melancon Road  
Broussard, LA  
United States

the right to use the Official API Monogram® on manufactured products under the conditions in the official publications of the American Petroleum Institute entitled API Spec Q1® and **API-8C** and in accordance with the provisions of the License Agreement.

In all cases where the Official API Monogram is applied, the API Monogram shall be used in conjunction with this certificate number: **8C-0195**

The American Petroleum Institute reserves the right to revoke this authorization to use the Official API Monogram for any reason satisfactory to the Board of Directors of the American Petroleum Institute.

The scope of this license includes the following: Casing, Tubing, Drill Pipe and Drill Collar Elevators at PSL 1, PSL 2

QMS Exclusions: No Exclusions Identified as Applicable

Effective Date: JULY 5, 2022

Expiration Date: JULY 21, 2024

To verify the authenticity of this license, go to [www.api.org/compositelist](http://www.api.org/compositelist).

Senior Vice President of Global Industry Services

*Anchal Liddar*



®

**American  
Petroleum  
Institute**



2019 151 | Digital

# KET MAKE UP STANDS AND TONG DIE DRIVERS



The KET Safety Make-Up Stand is used to support stabilizers, subs, and other drilling tools during bottom hole make-up. It is located on the side of the rotary table, away from the slips and safety clamps.

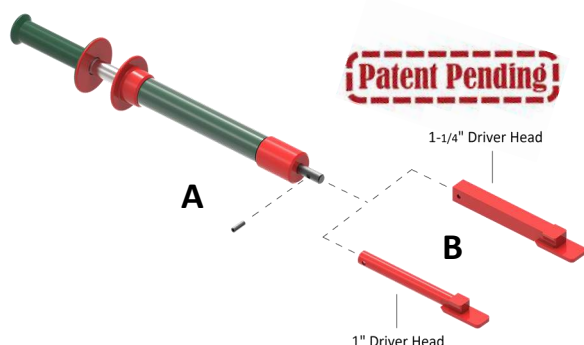
## KET SAFETY MAKE-UP STAND

PART NO.	DESCRIPTION	PIN DIA.	RATING	HEIGHT	WT.
A26-900	KET SAFETY MAKE-UP STAND	2"	10,000 LBS	24"	140

## KET TONG DIE DRIVERS

PART NO.	ITEM	DESCRIPTION	WT.
A26-425	A	KET HAMMERLESS TONG DIE DRIVER /COMPLETE W/ 1 1/4" DRIVER HEAD	12.25
A26-426	A	KET HAMMERLESS TONG DIE DRIVER /COMPLETE W/ 1" DRIVER HEAD	11.30
A26-400	B	1 1/4" DRIVER HEAD ONLY F/ HAMMERLESS TONG DIE DRIVER	2.41
A26-401	B	1" DRIVER HEAD ONLY F/ HAMMERLESS TONG DIE DRIVER	2.17
A26-300	C	KET 1 1/4" STRAIGHT TONG DIE DRIVER	7.25
A26-310	C	KET 1" STRAIGHT TONG DIE DRIVER	7.25
A26-350	D	KET 1 1/4" ANGLE TONG DIE DRIVER	9.25
A26-360	D	KET 1" ANGLE TONG DIE DRIVER	9.25

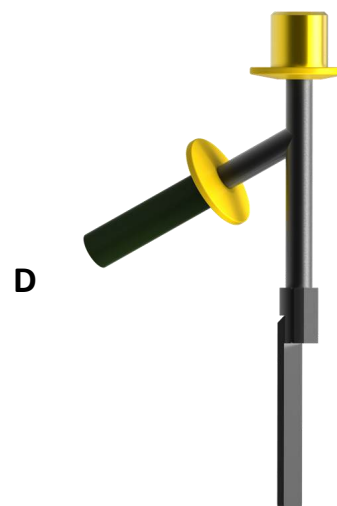
## Hammerless Tong Die Driver



## Straight Tong Die Driver



## Angled Tong Die Driver



## KET TONG SAFETY HANDLES AND BUMPERS



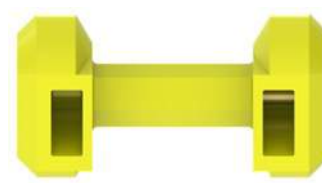
A



B



C

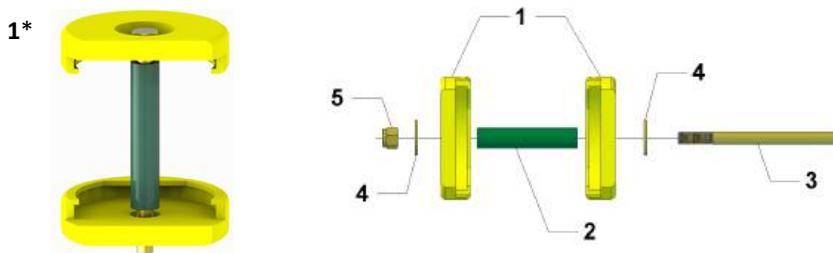


D

### TONG SAFETY HANDLES

PART NO.	ITEM	DESCRIPTION	WT.
T20000-SH-1	A	2 PC TONG SAFETY HANDLE KIT F/ TONGS MODIFIED WITH 3/8" HOLES	1.25
T20000-SH-2	A	2 PC TONG SAFETY HANDLE KIT F/ TONGS WITH STEEL HANDLES	1.25
T20000-SH-3	B	2 PC TONG SAFETY HANDLE F/ TYPE "C" LONG JAW	1.10
T20000-SH-4	C	2 PC TONG SAFETY HANDLE F/ TONG MODIFIED W/ 1 3/4" WIDE HANDLES W/ 3/4" HOLES	1.18
T20000-DB	D	DUMBBELL TONG SAFETY HANDLE	2.16

### SAFETY CAP ASSEMBLY FOR VARCO® TONGS



PART NO.	ITEM	DESCRIPTION	QTY	WT.
T250369	1*	SAFETY CAP ASSEMBLY FOR VARCO TONGS	1	2.66
T250369-1	1	SAFETY CAP (SET OF 2)	1	1.61
T250369-2	2	GRIP HOSE FOR SAFETY CAP ASSEMBLY	1	.15
T250369-3	3	BOLT FOR SAFETY CAP ASSEMBLY	1	.65
T250369-4	4	WASHER FOR SAFETY CAP ASSEMBLY	2	.08
T250369-5	5	LOCKNUT FOR SAFETY CAP ASSEMBLY	1	.09



### SAFETY BUMPERS

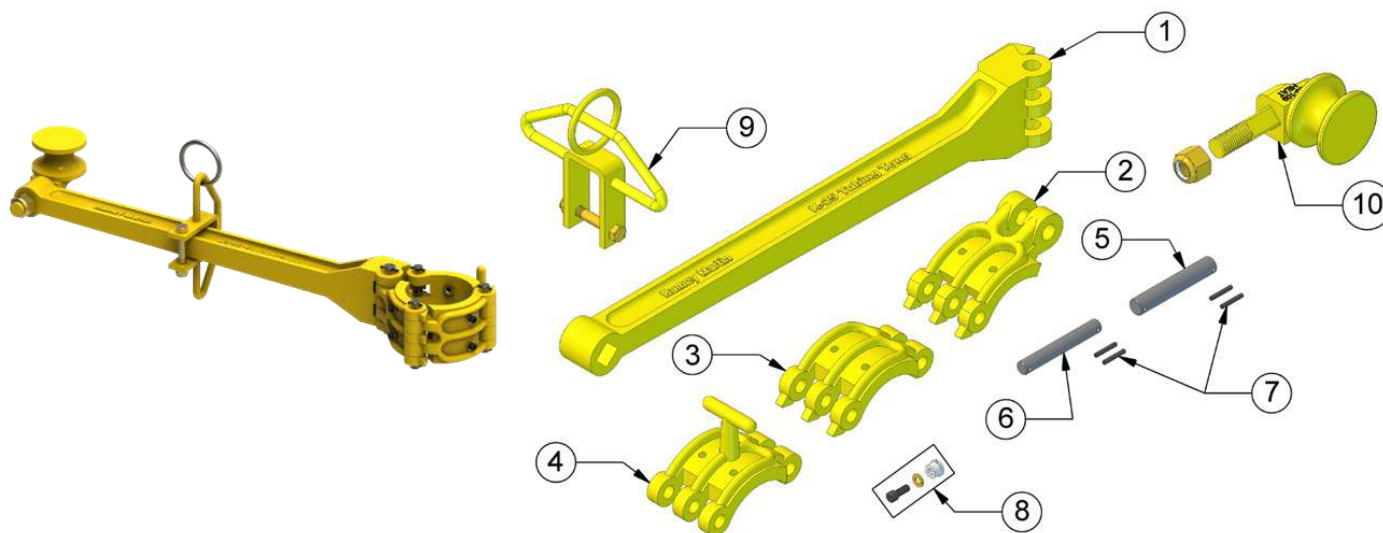
The KET Safety Bumpers are used on the ST-80, Mud Buckets, and other miscellaneous rig equipment where hand protection is required. The two piece design allows for easy installation with the size molded into each rubber for easy recognition.

PART NO.	DESCRIPTION	WT./SET
T20000-SH-7-4	1/2" SAFETY BUMPER (SET)	1.90
T20000-SH-7-6	3/4" SAFETY BUMPER (SET)	1.90
T20000-SH-7-7	7/8" SAFETY BUMPER (SET)	1.90
T20000-SH-7-8	1" SAFETY BUMPER (SET)	1.90

## KET “K-25” LIGHT WEIGHT TUBING TONG

The KET K-25 Tubing Tong has a wide range from 1.050 thru 2 7/8”, and is light-weight with a wrap-around design providing approximately 300 deg. die contact. This prevents crushing or cutting of thin wall tubing. The tong can be used by hand or with a rope block and cat line, when making-up or breaking-out tubing. They are made of high alloy steel, heat-treated for strength and wear, and then tested. The KET K-25 light-weight tubing tong has a 2,000 ft.-lb maximum torque rating. All tongs are pull-tested and complete documentation is available with each tong.

PART NO.	DESCRIPTION	WT.
A05-101	K-25 TONG COMPLETE LESS DIES, ROPE GUIDE & HANGER	16.50
A05-102	K-25 TONG COMPLETE LESS DIES w/ROPE GUIDE & HANGER	21.00



### REPLACEMENT PARTS FOR K-20 & K-25 TUBING TONG

PART NO.	ITEM#	DESCRIPTION	#REQ.	*SPARES	WT.
A05-114	1	TONG LEVER F/ K25 TONG	1		9.75
A05-106	2	K-25 LEVER JAW	1		2.12
A05-108	3	K-25 CENTER JAW	1		2.12
A05-107	4	K-25 LATCH JAW	1		2.75
A05-104	5	TONG LEVER PIN	1	1	.37
A05-103	6	TONG HEAD PIN	3	3	.12
A05-117	7	RETAINER PINS	8	8	.03
A05-105	8	TONG DIE BUSHING & SCREW	6	24	.06
A05-113	9	ROLLOVER HANGER WITH SCREW AND NUT	1		1.75
A05-109	10	K-20 OR K-25 ROPE GUIDE WITH NUT	1		2.75

DIES FOR K-20 AND K-25 REFER TO PAGE 91

\*RECOMMENDED SPARE PARTS FOR ONE YEAR

RECOMMENDED DIES FOR ONE YEAR ORDER 3 FOR EACH SIZE REQUIRED

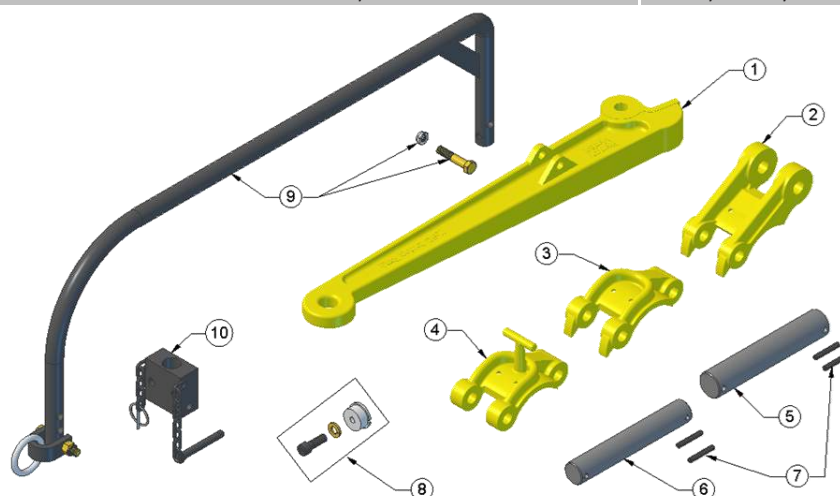
ALL PARTS ARE INTERCHANGEABLE WITH KELCO\*\* K-20 & K-25 TUBING TONGS

## KET “K-30 & K-50 MANUAL TUBING TONG

KET K-Series Tubing Tongs are designed for heavy duty service of tubing 1.660” to 3.875” OD. They have a wrap-around design with approximately a 300 deg. die contact. This prevents cutting or crushing of thin wall tubing. All tongs are pulled tested and complete documentation is available with each tong.



PART NO.	DESCRIPTION	RANGE	RATING	WT.
A06-101	K-30 TONG ASSEMBLY COMPLETE LESS HANGER AND DIES	1 1/2 – 4 1/8	5,000 FT. LBS	48
A06-102	K-30 TONG ASSEMBLY COMPLETE LESS DIES W/ STANDARD HANGER	1 1/2 – 4 1/8	5,000 FT. LBS	61
A06-103	K-30 TONG ASSEMBLY COMPLETE LESS DIES W/ ROLLOVER HANGER	1 1/2 – 4 1/8	5,000 FT. LBS	64
A06-501	K-50 TONG ASSEMBLY COMPLETE LESS HANGER AND DIES	2 3/8 – 5 1/2	7,500 FT. LBS	60
A06-502	K-50 TONG ASSEMBLY COMPLETE LESS DIES W/ STANDARD HANGER	2 3/8 – 5 1/2	7,500 FT. LBS	75
A06-503	K-50 TONG ASSEMBLY COMPLETE LESS DIES W/ ROLLOVER HANGER	2 3/8 – 5 1/2	7,500 FT. LBS	77

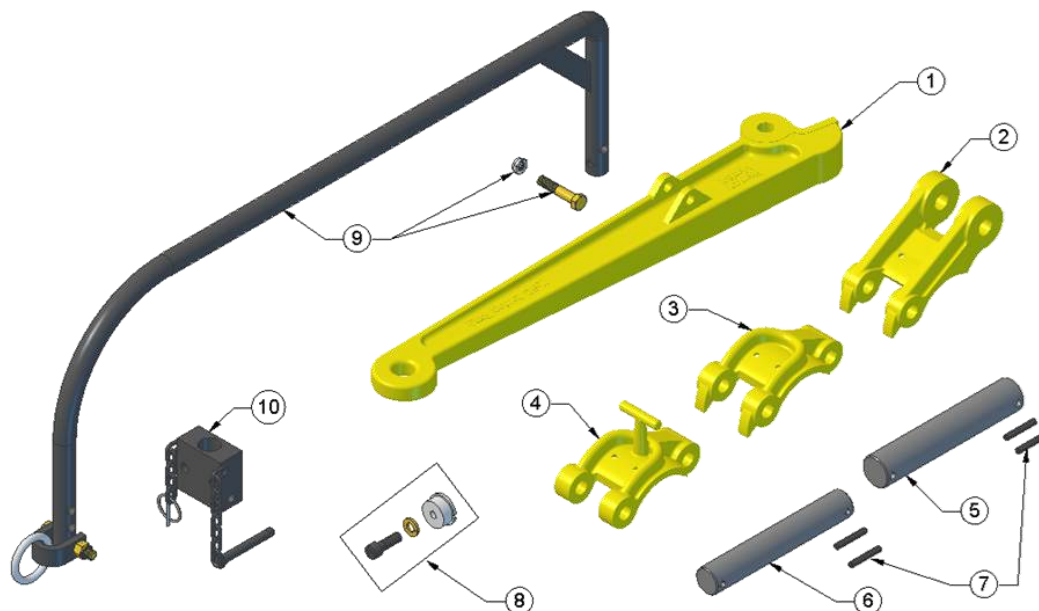


### REPLACEMENT PARTS FOR K-30 TUBING TONG

PART NO#	ITEM#	DESCRIPTION	#REQ.	*SPARES	WT.
A06-104	1	TONG LEVER	1		24.00
A06-105	2	LEVER JAW	1		8.00
A06-106	3	CENTER JAW	1		5.50
A06-107	4	LATCH JAW	1		5.75
A06-509	5	TONG LEVER PIN	1	1	.75
A06-109	6	TONG HEAD PIN	3	3	.50
A06-157	7	RETAINER PINS	8	8	.03
A06-110	8	TONG DIE BUSHING W/ SCREW	6	24	.10
A06-113	9	TONG HANGER W/ HANGER SCREW & NUT	1		13.00
A06-114	10	ROLLOVER BLOCK	1		2.50



## KET K-30 & K-50 TUBING TONG REPLACEMENT PARTS



### REPLACEMENT PARTS FOR K-50 TUBING TONG

PART NO#	ITEM#	DESCRIPTION	#REQ.	*SPARES	WT.
A06-504	1	TONG LEVER	1		24.00
A06-505	2	LEVER JAW	1		8.00
A06-506	3	CENTER JAW	1		5.50
A06-507	4	LATCH JAW	1		5.75
A06-508	5	TONG LEVER PIN	1	1	.75
A06-509	6	TONG HEAD PIN	3	3	.50
A06-516	7	RETAINER PINS	8	8	.03
A06-510	8	TONG DIE BUSHING W/ SCREW	6	24	.10
A06-113	9	TONG HANGER W/ HANGER SCREW & NUT	1		13.00
A06-114	10	ROLLOVER BLOCK	1		2.50

### REPLACEMENT PARTS FOR K-50HT & K-70 TUBING TONG

PART NO#	ITEM#	DESCRIPTION	#REQ.	*SPARES	WT.
A06-708	5	TONG LEVER PIN	1	1	.75
A06-508	6	TONG HEAD PIN	3	3	.50
A06-516	7	RETAINER PINS	8	8	.03
A06-510	8	TONG DIE BUSHING W/ SCREW	6	24	.10
A06-113	9	TONG HANGER W/ HANGER SCREW & NUT	1		13.00
A06-114	10	ROLLOVER BLOCK	1		2.50



**PRESSURE SYSTEM BUILDERS**  
**PSBV**  
V I E T N A M

**MALAYSIA:** No. 49-1, Jalan 7/7A, 43650 Bandar Baru Bangi, Selangor

**VIETNAM:** 16 Yen The, Ward 2, Tan Binh District, HCMC

**THAILAND:** 245/19 Moo1 T.Khaorooopchang, Muang Songkhla, 90000

**drilling@psbvn.com**

**+ 84 89 6677 890**  
**WhatsApp/Line/Zalo**