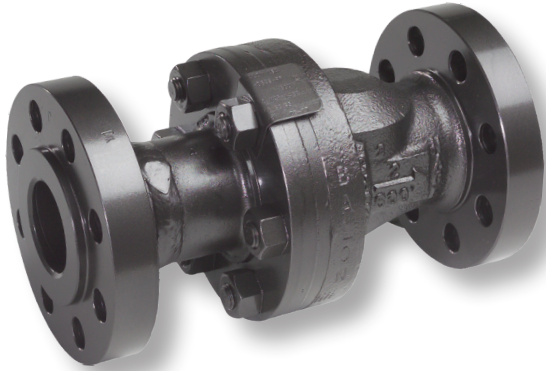
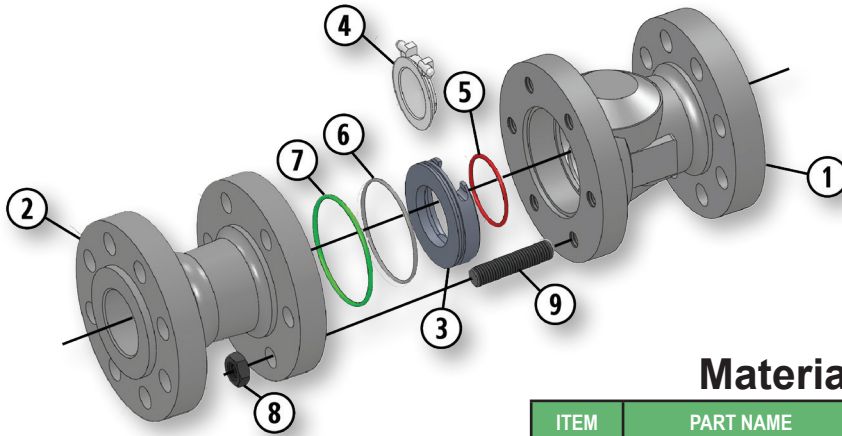


# Flanged End Connection

## Series C Carbon Steel



- 100% Made in USA
- ANSI Class 600 (1480 PSI WP)
- 2" Through 6"
- Bolted Body Construction
- NACE Standard
- Improved Seat Design Protects Seal From Flow
- Replaceable 316 Stainless Steel Seat Disc Cartridge Standard



### Material Description

ITEM	PART NAME	DESCRIPTION
1	Body	ASTM A216 WCB/A105, Normalized
2	Adapter	ASTM A216 WCB/A105, Normalized
3	Seat	Replaceable 316 Stainless Steel
4	Disc	Replaceable 316 Stainless Steel
5	O-Ring	Seat Seal: Fluorocarbon
6	O-Ring	Assembly Seal: Fluorocarbon
7	O-Ring	Body Seal: Fluorocarbon
8	Nuts	ASTM A194 2HM
9	Body Bolts	ASTM A193 B7M

### Dimensional Data

SIZE	CATALOG	PORT	D	L	LBS.
2	2F-C63S-RF	2	6.50	11.5	42
3	3F-C63S-RF	3	8.00	14.0	80
4	4F-C63S-RF	4	10.75	17.0	188
6	6F-C63S-RF	6	13.75	22.0	384

