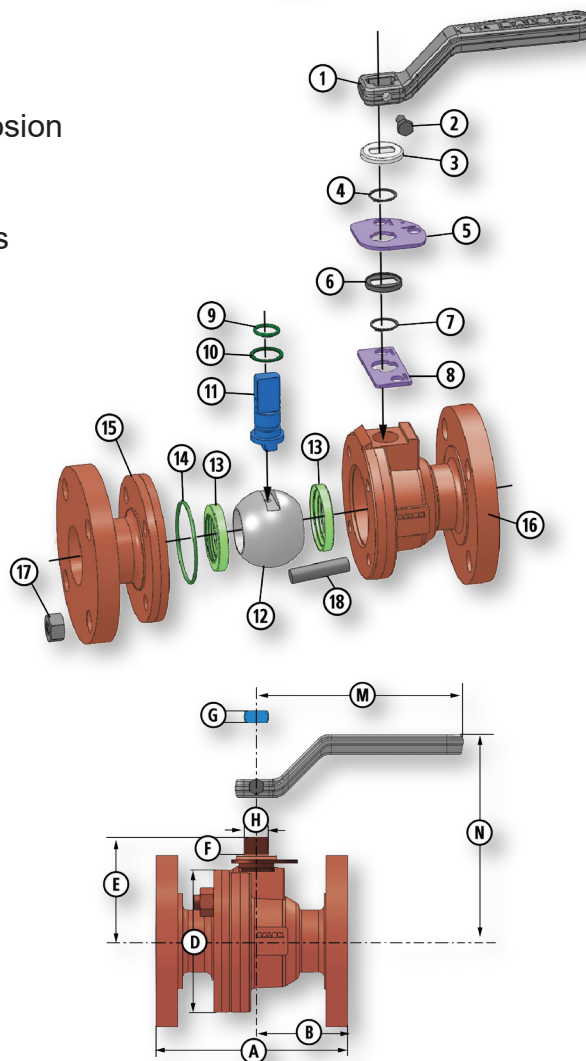
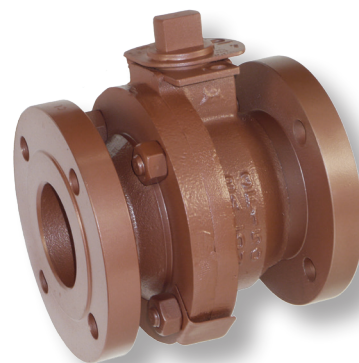


Flanged End Connection

Series F Ductile Iron

- 100% Made in USA
- ANSI Class 150 (250 PSI WP)
Raised Face or Flat Face
- 2" Through 6"
- Bolted Body Construction
 - Certified Low Emission Per API 641
 - Fire Safe Design
 - NACE Option With 316 Stainless Steel Ball and Stem Available
- High Grade Annealed Ductile Iron for Better Corrosion Resistance and Greater Yield Strength
- Rugged Locking Device Standard
- Eliminates High Maintenance of Lubricated Valves
- Multi-Seal Seats (See page B-5)



Material Description

ITEM	PART NAME	MATERIAL (STANDARD)	MATERIAL (NACE)
1	Handle*	Carbon Steel/Ductile Iron	Carbon Steel/Ductile Iron
2	Handle Bolt	Standard Hex Bolt	Standard Hex Bolt
3	Weather Guard	Polypropylene	Polypropylene
4	Lock Plate Retainer	Carbon Spring Steel	Carbon Spring Steel
5	Lock Plate	Carbon Steel	Carbon Steel
6	Dust Cover	Polypropylene	Polypropylene
7	Stop Plate Retainer	Carbon Spring Steel	Carbon Spring Steel
8	Stop Plate	Carbon Steel	Carbon Steel
9	Stem O-Ring	Buna-N	Fluorocarbon
10	Stem Seal	TFE	TFE
11	Stem	Carbon Steel	316 Stainless Steel
12	Ball	Carbon Steel Nickel Chrome Plated	316 Stainless Steel
13	Ball Seat	Nylon 11 (TFE Optional**)	Nylon 11 (TFE Optional**)
14	Body O-Ring	Buna-N	Fluorocarbon
15	End Adapter	ASTM A395 Class 60-40-18 Fully Annealed	ASTM A395 Class 60-40-18 Fully Annealed
16	Body	ASTM A395 Class 60-40-18 Fully Annealed	ASTM A395 Class 60-40-18 Fully Annealed
17	Nuts	ASTM A194 2H	ASTM A194 2HM
18	Body Bolts	ASTM A193 B7	ASTM A193 B7M

* Handle is optional. Balon valves can also be operated with a standard open-end wrench.
 ** Seat selection may result in de-rating of pressure. See Seat Pressure Ratings chart on page TD-4 for more information.

Dimensional Data

SIZE	CATALOG NUMBER		PORT	WP	A	B	D	E	F	G	H	M	N	LBS.	HANDLE	Cv
	STANDARD TRIM CARBON STEEL BALL & STEM	NACE TRIM 316 SS BALL & STEM														
2x1.5x2	2R-F12	2R-F12N	1.5	250	7.00	3.25	5.00	3.62	0.75	.434	0.873	7.25	5.25	23	P-4128-CS	125
2x2x2	2F-F12	2F-F12N	2.0	250	7.00	2.75	6.00	4.37	0.87	.497	0.998	10.25	6.20	28	P-4129-CS	-
3x2x3	3R-F12	3R-F12N	2.0	250	8.00	3.00	6.00	4.37	0.75	.497	0.998	10.25	6.20	30	P-4129-CS	200
3x3x3	3F-F12	3F-F12N	3.0	250	8.00	3.56	7.50	5.75	1.06	.747	1.373	20.00	7.75	54	P-4127-DI	-
4x3x4	4R-F12	4R-F12N	3.0	250	9.00	4.06	7.87	5.75	0.87	.747	1.373	20.00	7.75	65	P-4127-DI	525
4x4x4	4F-F12	4F-F12N	4.0	250	9.00	4.06	9.00	6.37	1.06	.747	1.373	20.00	8.37	80	P-4127-DI	-
6x4x6	6R-F12	6R-F12N	4.0	250	10.50	4.81	9.25	6.37	1.06	.747	1.373	20.00	8.37	75	P-4127-DI	800

Balon manufactured Actuation Mounting Hardware available. Please see page A-2 for details.

BALON

01.2025.Rev.1