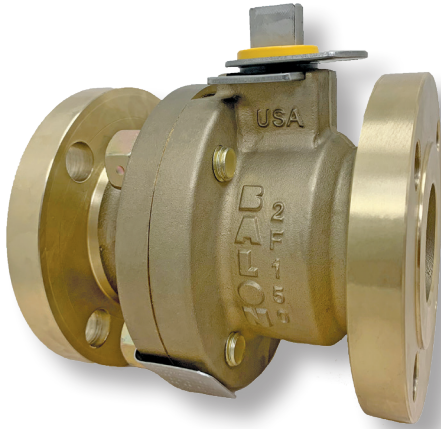
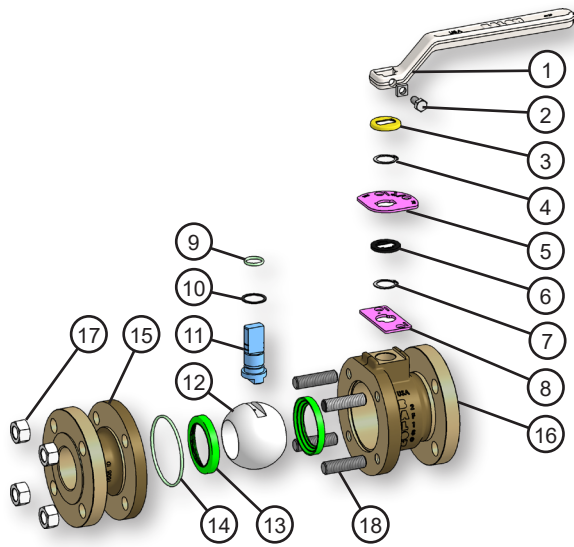


Flanged End Connection Series F "9D" Nickel Aluminum Bronze



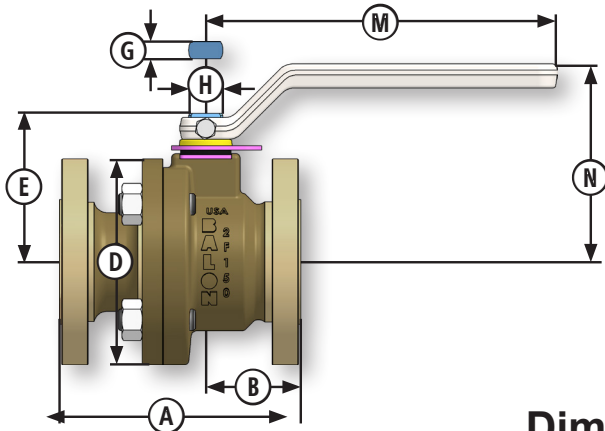
- 100% Made in USA
- ANSI Class 150 (285 PSI WP)
- 2" Through 4"
- ASTM B148 GR 955 "9D"
- Bolted Body Construction
- NACE Standard
 - Certified Low Emission Per API 641
 - Fire Safe Design
 - Enhanced Protection Against CO2 and Saltwater Corrosion
- Exceptional Yield Strength
- Multi-Seal Seats (See page B-5)
- Rugged Locking Device Standard



Material Description

ITEM	PART NAME	MATERIAL (NACE)
1	Handle*	Carbon Steel / Ductile Iron
2	Handle Bolt	Standard Hex Bolt
3	Weather Guard	Polypropylene
4	Lock Plate Retainer	Stainless Steel
5	Lock Plate	Stainless Steel
6	Dust Cover	Polypropylene
7	Stop Plate Retainer	Stainless Steel
8	Stop Plate	Stainless Steel
9	Stem O-Ring	Fluorocarbon
10	Stem Seal	TFE
11	Stem	316 Stainless Steel
12	Ball	316 Stainless Steel
13	Ball Seat	Nylon 11 (TFE Optional**)
14	Body O-Ring	Fluorocarbon
15	End Adapter	ASTM B148-9D (955)
16	Body	ASTM B148-9D (955)
17	Nuts	ASTM A194 7M
18	Body Bolts	ASTM A193 L7M

* Handle is optional. Balon valves can also be operated with a standard open-end wrench.
** Seat selection may result in de-rating of pressure. See Seat Pressure Ratings chart on page TD-4 for more information.



Dimensional Data

SIZE	CATALOG NUMBER	PORT	A	B	D	E	F	G	H	M	N	LBS.	HANDLE	Cv
	NACE TRIM 316 SS BALL & STEM													
2x2x2	2F-F14N-RF	2	7.0	2.75	6.00	4.37	0.87	.497	0.998	10.25	6.20	28.0	P-4129-CS	-
3x3x3	3F-F14N-RF	3	8.0	3.56	7.50	5.75	1.06	.747	1.373	20.0	7.75	54.0	P-4127-DI	-
4x4x4	4F-F14N-RF	4	9.0	4.06	9.00	6.37	1.06	.747	1.373	20.0	8.37	80.0	P-4127-DI	-

Balon manufactured Actuation Mounting Hardware available. Please see page A-2 for details.
Also available with Balon Gear Operator