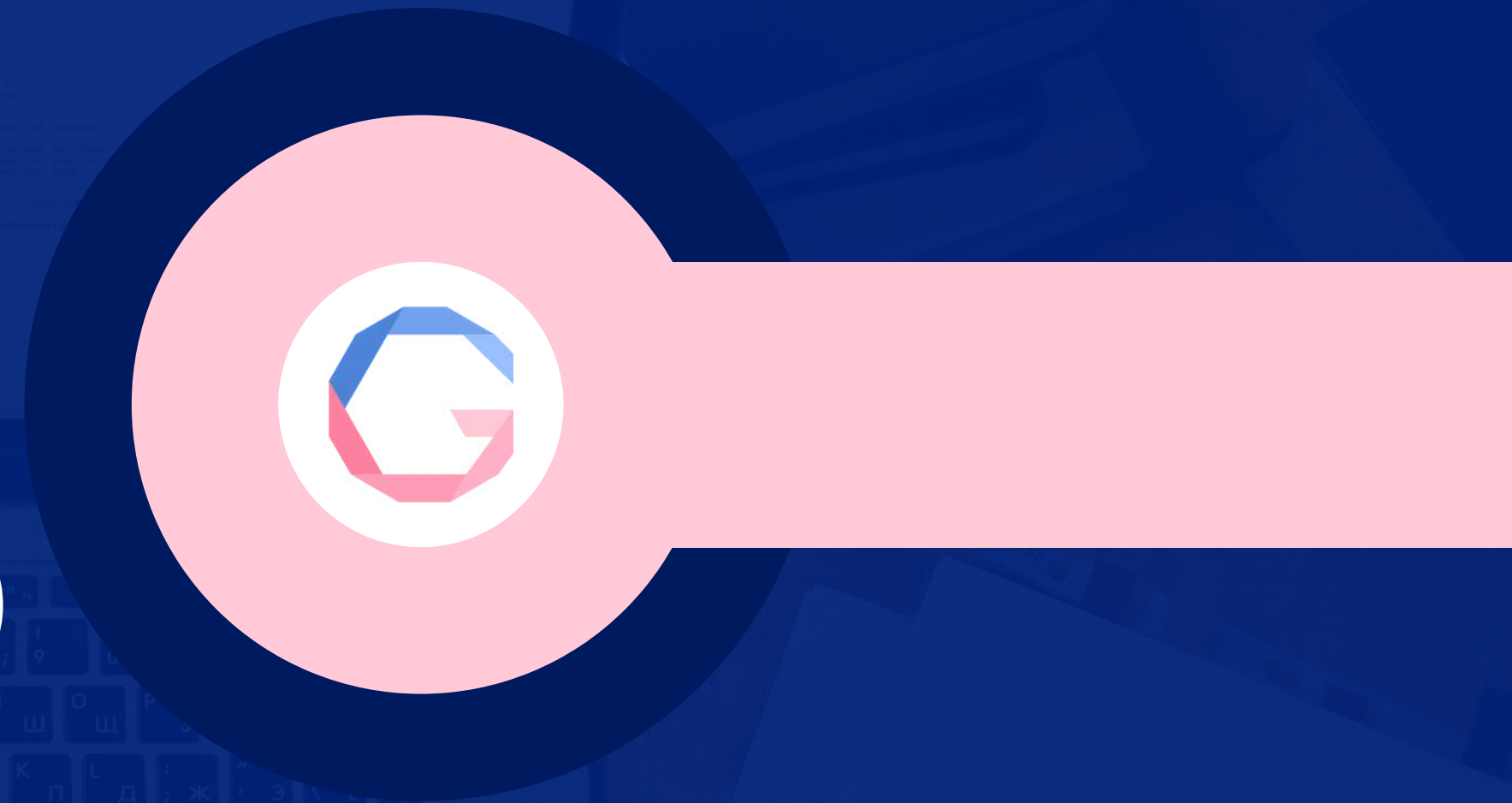


# PAID PLACEMENT PROGRAM 120

Paid placement in care and support –  
Be ready for a purpose-driven career.



# Program Overview



The Paid Placement Program 120 is a structured, employment-integrated initiative for students currently undertaking qualifications in health care, disability support, community services, or youth and mental health work.

This program combines mandatory course placement hours with hands-on, paid work experience to give you the skills, confidence, and professional insight required to thrive in the Australian care sector.

Over 120 supervised hours, you will work directly with clients and support teams in real workplace settings, whether in disability care, aged care, youth services, or mental health, while being paid according to national Fair Work standards.

This is more than just a placement, it's your opportunity to develop core industry competencies and build a pathway to meaningful employment.

# Who is it for?

**This program is designed for students currently enrolled in the following qualifications:**

- Certificate III/ IV in Individual Support (Disability or Aged Care)
- Certificate IV in Mental Health
- Certificate IV in Youth Work

**You may benefit from this program if you:**

- Need to complete mandatory placement hours for your qualification
- Want to gain real-life, paid experience in a care setting
- Are keen to work directly with clients and professional care teams
- Hope to build long-term employability within the care and community sector
- Are committed to ethical, person-centred, and inclusive care practices

# Learning Outcomes

## During this placement, you will:

- Fulfil your course's work placement requirements
- Apply classroom knowledge in real-life scenarios under professional supervision
- Develop core skills in direct care, client communication, behaviour management, documentation, and teamwork
- Learn about the structure and processes of NDIS-funded services, including compliance, safety, privacy, and duty of care
- Receive structured feedback and supervision to support your development
- Walk away with a reference letter, a performance review, and the possibility of a long-term job offer

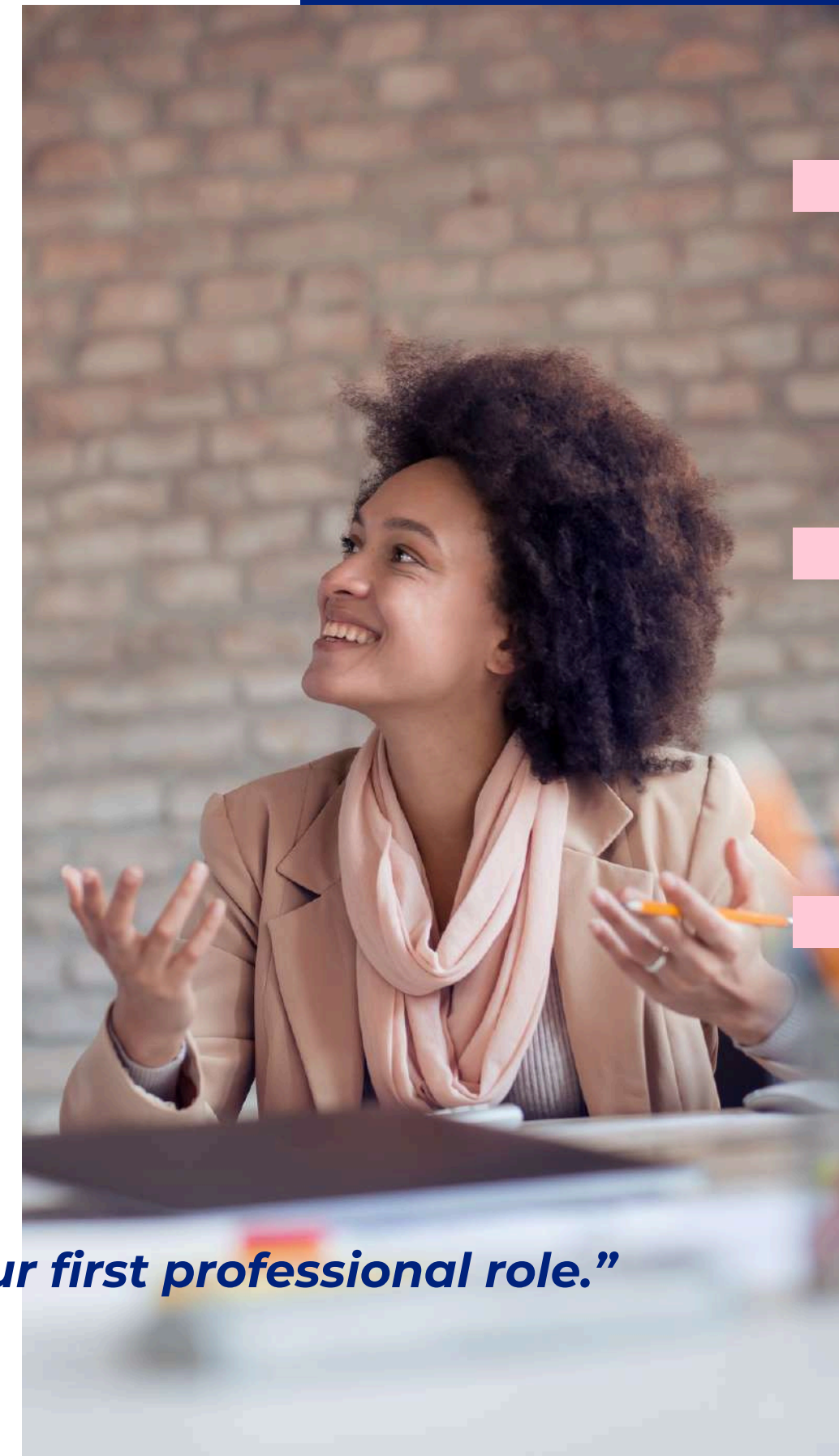


# Additional Support

**Next Gem is committed to maximising both your learning and career outcomes. Throughout your placement, we will support you with:**

- Paid hourly work, **starting from \$32.56/hour**
- A dedicated workplace supervisor for day-to-day guidance
- Ongoing support from the Next Gem placement team
- Career coaching, resume and interview preparation after your placement
- Opportunities to connect with employers seeking permanent staff
- Guidance on professional conduct, communication, and cultural awareness

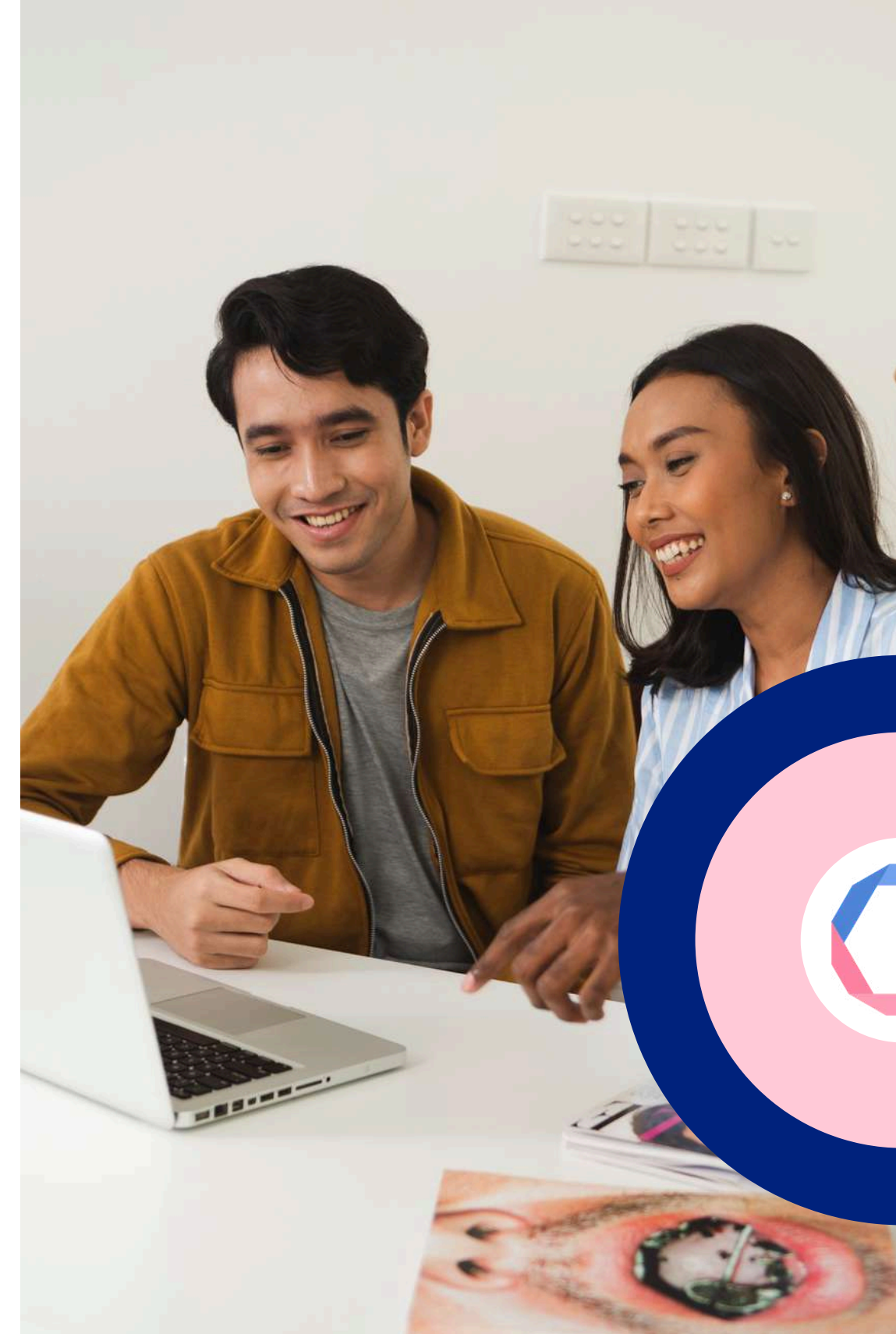
***“We don’t just place you—we prepare you to succeed in your first professional role.”***



# Eligibility

## To be eligible for this program, you must:

- Be currently enrolled in one of the eligible Certificate III or IV qualifications
- Have valid working rights in Australia (international students welcome)
- Be available to complete 120 placement hours within an agreed timeframe
- Hold or be willing to obtain:
  - National Police Check
  - Working with Children Check (if required)
  - NDIS Worker Screening Check (highly recommended)
- Demonstrate responsibility, professionalism, and strong communication skills



# How to apply?

To receive the application form, please email:  
[team@nextgem.com.au](mailto:team@nextgem.com.au)

## For more information, contact us via:

Location :

7 Addison, Pennington,  
SA 5013

Website :

[www.nextgem.com.au](http://www.nextgem.com.au)

Phone :

+61 493 381 432  
(Zalo, Whatsapp, Wechat)

Email:

[team@nextgem.com.au](mailto:team@nextgem.com.au)





**THANK YOU**